

# FACTSHEET - NORTHERN IRELAND

Supporting Implementation of Maritime  
Spatial Planning  
In the Atlantic region



WP.3 – Theme 3: Data use and sharing



European Commission  
Directorate-General for Maritime Affairs and Fisheries



## INTRODUCTION

A factsheet related to data sharing for MSP is established regarding each country of SIMAtlantic project. It brings together information relating to MSP and addresses some technical questions relating to the operation of the national geoportal, the technical choices, the available sources, the data accessibility ...

This content is used to feed the information disseminated on the SIMAtlantic data portal ([simatlantic.mspdata.eu](http://simatlantic.mspdata.eu)), through different means: geodata, preconfigured maps, dashboard and associated web pages.

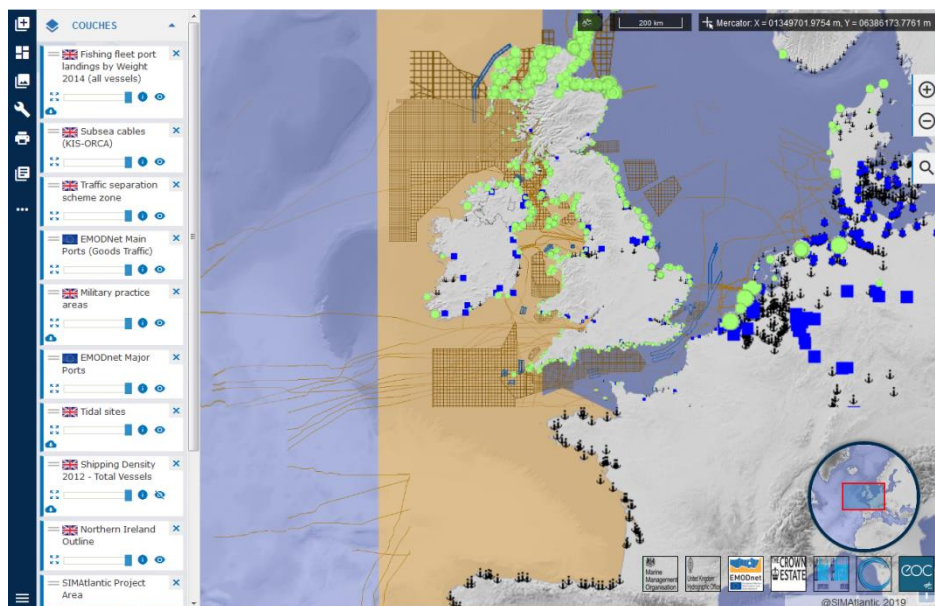
## SIMATLANTIC DATA PORTAL

The SIMAtlantic data portal aims to ease the access and enable sharing data relevant for the MSP relating to countries of the SIMAtlantic project (Portugal, Spain, France, Ireland, England and Northern Ireland). In particular it is used to bring together the datasets related to the national marine spatial plans.

The SIMAtlantic data catalogue intends to cover all themes relating to MSP including maritime and terrestrial boundaries, regulatory limits, environmental, physical and biological characteristics, uses and activities, and national plans.

A major quality assurance requirement that must be met to enable publication on the SIMAtlantic data portal is the availability of metadata record and that data is available in web services.

The data related to Northern Ireland are available for consultation at [simatlantic.mspdata.eu](http://simatlantic.mspdata.eu). The data catalogue groups the data by themes categories, and then by country.



## NORTHERN IRELAND MSP PROCESS

<b>MSP Directive transcription</b>	<i>National legislative document which transcribes the MSP Directive 2014/89 / EU</i>	/
<b>National policies</b>	<i>Other national legislative documents in force for the MSP</i>	Marine and Coastal Access Act 2009 (MCAA) Marine Act (Northern Ireland) 2013 (The Marine Act)
<b>Competent authority</b>	<i>Competent authority in charge of MSP at national level</i>	Department of Agriculture, Environment and Rural Affairs (DAERA)
<b>Delegated authority</b>	<i>Delegated authority to implement MSP</i>	/
<b>National MSP plans</b>	<i>Name of the MSP plan</i>	Marine plan for Northern Ireland draft published for consultation in 2018 and the consultation responses will be published in 2020
<b>MSP plans URL</b>	<i>Plan consultation address</i>	<a href="https://www.daera-ni.gov.uk/articles/marine-plan-northern-ireland">https://www.daera-ni.gov.uk/articles/marine-plan-northern-ireland</a> <a href="https://www.daera-ni.gov.uk/sites/default/files/consultations/daera/Marine%20Plan%20for%20NI%20final%2016%2004%2018.PDF">https://www.daera-ni.gov.uk/sites/default/files/consultations/daera/Marine%20Plan%20for%20NI%20final%2016%2004%2018.PDF</a>
<b>Number of marine plans</b>	<i>Number of plans drawn up by the State</i>	2 marine plan areas : -Inshore region under the Marine Act -Offshore region under the MCAA
<b>Covering</b>	<i>Maritime area covered by the national plan</i>	Inshore and offshore regions
<b>MSP Geoportal</b>	<i>Name of the national geoportal dedicated to MSP</i>	Northern Ireland Marine Map Viewer
<b>Geoportal URL</b>	<i>Address of the national geoportal</i>	<a href="https://apps.d.aera-ni.gov.uk/marinemapviewer/">https://apps.d.aera-ni.gov.uk/marinemapviewer/</a>
<b>Access to spatial plan</b>	<i>Means of access to the plan</i>	No - visualisation only
<b>Access to data evidence (input)</b>	<i>Means of access to the data used to draw up the plans</i>	No - visualisation only
<b>Web services</b>	<i>Is there a MPS data web service harvestable by the Shom SDI?</i>	Disseminate by ESRI ArcGIS REST API - Mostly not accessible in WMS / WFS. Difficulties to find the OGC web services url. When there are accessible there is a web service per dataset therefore difficulty in knowing what data is accessible in WMS. They must be consulted one by one. Example: <a href="https://data.ogauthority.co.uk/arcgis/services/OGA_Public_WGS84/OGA_Wells_WGS84/MapServer/WMSServer?request=GetCapabilities&amp;service=WMS">https://data.ogauthority.co.uk/arcgis/services/OGA_Public_WGS84/OGA_Wells_WGS84/MapServer/WMSServer?request=GetCapabilities&amp;service=WMS</a>
<b>Metadata</b>	<i>Is there a MSP metadata catalogue harvestable by the Shom SDI?</i>	No metadata catalogue harvestable A small part accessible in ESRI ArcGIS REST API service – Incomplete metadata Example : <a href="https://apps.d.aera-ni.gov.uk/daeragis/rest/services/Marine/1Boundaries/MapServer/15">https://apps.d.aera-ni.gov.uk/daeragis/rest/services/Marine/1Boundaries/MapServer/15</a>
<b>National sources</b>	<i>National sources used for populating the SIMAtlantic portal</i>	Marine Management Organisation (MMO) – UK hydrographic Office (UKHO) – The Crown Estate – Marine Scotland – Office for National Statistics (ONS) – Ordnance Survey of Northern Ireland (OSNI)



## QUESTIONS

### Northern Ireland MSP process table

The main information related to MSP in Northern Ireland used to develop the SIMAtlantic portal content are brought together in the table "Northern Ireland MSP process". Is this information correct?

Yes

### SIMAtlantic data portal

1. Are the sources of the data related to Northern Ireland on the SIMAtlantic portal, the one used to establish the national MSP plans?

Yes

2. Are there other sources for accessing data in web services and their metadata?

The GIS infrastructure is being modernised, with the aim of creating OGC web services by 2021.

3. Are relevant layers missing? If so, which?

No

4. Are there web services that would allow us to publish them on the SIMAtlantic data portal?

No

5. Do additional relevant datasets to be shared with the other countries of SIMNORAT project exist, in particular dealing with transnational issues?

6. In the data catalogue, layers are organised by themes and sub-themes then by country. For the moment, England and Northern Ireland are grouped together. What would be the appropriate classification: option 1) as it is presented now, distinction of England and Northern Ireland, option 2) bring the information in a unique category related to United Kingdom of Great Britain and Northern Ireland.

1) As it is presented now, distinction of England and Northern Ireland.

### About the Northern Ireland Marine Map Viewer

7. In general, can you explain how the layer publication on this portal works?

The Marine Map Viewer will be published again in October 2020. Each section of the viewer (Aquaculture, Biodiversity, Surveillance, etc.) will be served by separate layers of map images. They are used because they visualise the data in the form of sub-

layers and the Mapviewer can therefore be divided into subjects. Each of these cartographic image layers is associated with an ArcGIS Pro project, containing a map that is used to define the order of the sub-layers, the symbology, the table schema and the field aliases. The map is then published on the DAERA Enterprise GIS portal with restricted access. Appropriate checks are then carried out before it is made "public".

8. Is the data infrastructure based on web services or on stored data?

The data consist of a mixture of stored data (in Enterprise enabled SDEs) and web services.

The stored data is served to the portal as a copy of the data, rather than a reference which means that the service must be manually updated every time new data is added. Web services are for 3rd party external datasets where available and where symbology is appropriate.

9. In case web services are used, are they harvested or consumed? Can you explain your choice?

Most of the third party data that has been used in the marine planning process is not yet available in the form of web services. Where possible, these services have been used, for example those of the Oil & Gas Authority. Otherwise, data is downloaded and stored in corporate geodatabase and available updates are then searched for.

10. Lots of layers published on the Northern Ireland Marine Map Viewer are not downloadable, for example « Fisheries Restrictions (Zones) » or « Dredging Activity 2005-15 Registered Activity », and some of them have no associated metadata. Do you know why?

Work is underway on the creation of MEDIN Standard metadata for corporate data sets. This task has not yet been completed due to resource issues. An Enterprise GIS Information Hub is also being developed as well as the development of a process for direct publication to Open Data NI.

11. In the Northern Ireland Marine Map Viewer, each layer is linked to a description page in which there is little link to metadata or web services. In case a link to a web service exists, the web service protocol is incompatible with the SIMAtlantic data architecture. Therefore, the metadata catalogue <https://www.opendatani.gov.uk/dataset/>, is used to access to certain metadata record and web service. But very little data displayed on the portal is available in this catalogue. Are these sources correct? Are there other sources to access English data in web services and their metadata?

Yes at present, there is little evidence available Marine Plan evidence data on the Open Data NI Portal. It is not possible to put third party datasets onto the ODNI Portal nor create Web Services for these. As above, the intention is to give corporate datasets MEDIN standard metadata and publish to Open Data NI through the Enterprise GIS Information Hub.

12. In particular, are the MSPD Inshore Marine Plan Extent and the MSPD Offshore

Marine Plan Extent layers available in web services like WMS or WFS? Not yet.  
There has been a slight change to legislation that is used to create part of the Marine Plan boundary just this month. Relevant metadata will be created and the layer will be made available hopefully as Open Data, subject to UKHO approval.

13. There are similarities between the organisation of Northern Ireland Marine Map Viewer and the one of Marine Planning Evidence. Have you worked in cooperation for the development of both geoportals?

No

#### CONTACT

##### Shom

French hydrographic office  
Geomatics Department

Maritime spatial planning office

[pem@shom.fr](mailto:pem@shom.fr)

Project Manager

Dominique CARVAL

Tel: +33 (0)2 56 31 23 68

[dominique.carval@shom.fr](mailto:dominique.carval@shom.fr)



SIMAtlantic Data Dissemination Manager

Magali ABJEAN

Tel: +33 (0)2 56 31 26 35

[magali.abjean@shom.fr](mailto:magali.abjean@shom.fr)