

# FACTSHEET - IRELAND

Supporting Implementation of Maritime  
Spatial Planning  
In the Atlantic region



WP.3 – Theme 3: Data use and sharing



European Commission  
Directorate-General for Maritime Affairs and Fisheries



## INTRODUCTION

A factsheet related to data sharing for MSP is established regarding each country of SIMAtlantic project. It brings together an information relating to MSP and addresses some technical questions relating to the operation of the national geoportal, the technical choices, the available sources, the data accessibility ...

This content is used to feed the information disseminated on the SIMAtlantic data portal ([simatlantic.mspsdata.eu](http://simatlantic.mspsdata.eu)), through different means: geodata, preconfigured maps, dashboard and associated web pages.

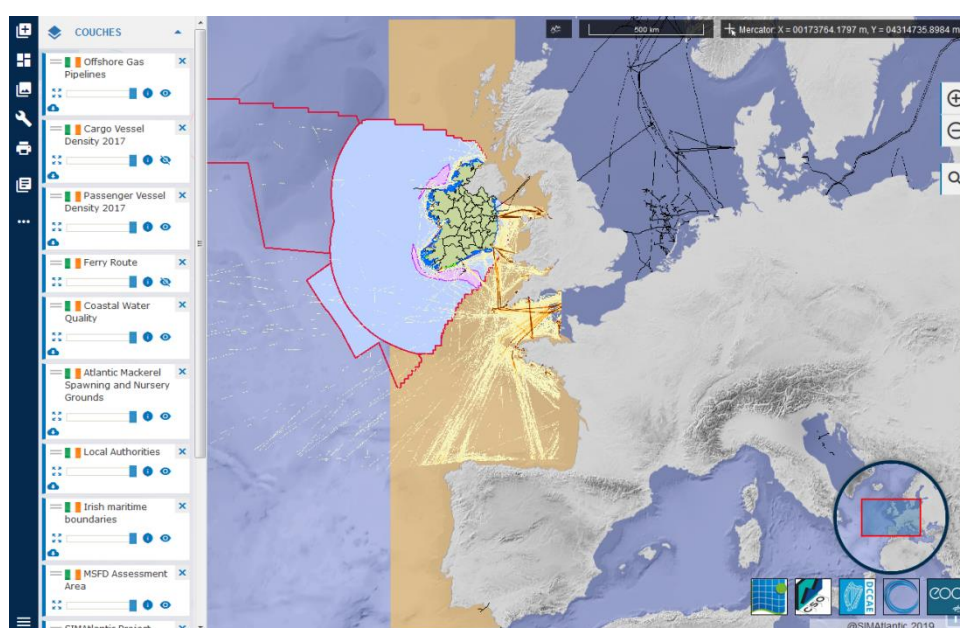
## SIMATLANTIC DATA PORTAL

The SIMAtlantic data portal aims to ease the access and enable sharing data relevant for the MSP relating to countries of the SIMAtlantic project (Portugal, Spain, France, Ireland, England and Northern Ireland). In particular it is used to bring together the datasets related to the national marine spatial plans.

The SIMAtlantic data catalogue intends to cover the all themes relating to MSP including maritime and terrestrial boundaries, regulatory limits, environmental, physical and biological characteristics, uses and activities, and national plans.

A major quality assurance requirement that must be met to enable publication on the SIMAtlantic data portal is the availability of metadata record and that data is available in web services.


The data sets related to Ireland are available for consultation at [simatlantic.mspsdata.eu](http://simatlantic.mspsdata.eu). The data catalogue groups the data by themes categories, and then by country.





## IRELAND MSP PROCESS

<b>MSP Directive transcription</b>	<i>National legislative document which transcribes the MSP Directive</i>	European Union (Framework For Maritime Spatial Planning) Regulations 2016 Planning and Development (Amendment) Act 2018
<b>National policies</b>	<i>Other national legislative documents in force for the MSP</i>	Marine Planning Policy Statement 2019 : <a href="https://www.housing.gov.ie/planning/marine-planning/marine-planning-policy-statement">https://www.housing.gov.ie/planning/marine-planning/marine-planning-policy-statement</a> Marine Planning and Development Management Bill (in development): <a href="https://www.housing.gov.ie/planning/marine-spatial-planning/foreshore/marine-planning-and-development-management-bill">https://www.housing.gov.ie/planning/marine-spatial-planning/foreshore/marine-planning-and-development-management-bill</a> Harnessing Our Ocean Wealth (HOOW 2012 - an Integrated Marine Plan for Ireland) : <a href="https://www.ouroceanwealth.ie/sites/default/files/sites/default/files/Harnessing%20Our%20Ocean%20Wealth%20Report.pdf">https://www.ouroceanwealth.ie/sites/default/files/sites/default/files/Harnessing%20Our%20Ocean%20Wealth%20Report.pdf</a>
<b>Competent authority</b>	<i>Competent authority in charge of MSP at national level</i>	Department for Housing, Local Government and Heritage (DHLGH)
<b>Delegated authority</b>	<i>Delegated authority to implement MSP</i>	/
<b>National MSP plans</b>	<i>Name of the MSP plan</i>	National Marine Planning Framework (NMPF) – consultation draft published in 2019 – final version is expected for 2021
<b>MSP plans URL</b>	<i>Plan consultation address</i>	<a href="https://www.housing.gov.ie/sites/default/files/public-consultation/files/draft_national_marine_planning_framework_final.pdf">https://www.housing.gov.ie/sites/default/files/public-consultation/files/draft_national_marine_planning_framework_final.pdf</a>
<b>Number of marine plans</b>	<i>Number of plans drawn up by the State</i>	1 marine plan
<b>Covering</b>	<i>Maritime area covered by the national plan</i>	Internal waters Territorial seas Exclusive Economic Zone Continental Shelf
<b>MSP Geoportal</b>	<i>Name of the national geoportal dedicated to MSP</i>	Marine Atlas hosted by Marine Institute
<b>Geoportal URL</b>	<i>Address of the national geoportal</i>	<a href="https://atlas.marine.ie/">https://atlas.marine.ie/</a>
<b>Access to spatial plan</b>	<i>Means of access to the plan</i>	Access in visualisation and access in web service Layer: National Marine Planning Framework Area (only WMS Marine Institute)
<b>Access to data evidence (input)</b>	<i>Means of access to the data used to draw up the plans</i>	Access in visualisation Access for a small part in web service
<b>Web services</b>	<i>Is there a MSP data web service harvestable by the Shom SDI?</i>	Yes, there are harvestable WFS and WMS for part of the data. Disseminate by ESRI ArcGIS REST API There is one web service for each dataset, for example : <a href="http://atlas.marine.ie/arcgis/services/Fisheries/MapServer/WMSServer?">http://atlas.marine.ie/arcgis/services/Fisheries/MapServer/WMSServer?</a>

 <b>Metadata</b>	<i>Is there a MSP metadata catalogue harvestable by the Shom SDI?</i>	<p>Yes, two metadata catalogue harvested:</p> <p>*Irish Spatial Data Exchange (ISDE):<a href="http://metadata.marine.ie/geonetwork/srv/eng/csw?">http://metadata.marine.ie/geonetwork/srv/eng/csw?</a> ; <a href="http://www.isde.ie/#/">http://www.isde.ie/#/</a></p> <p>-</p> <p>*Marine Institute data catalogue :  <a href="http://data.marine.ie/geonetwork/srv/eng/catalog.search#/search">http://data.marine.ie/geonetwork/srv/eng/catalog.search#/search</a></p>
<b>National sources</b>	<i>National sources used for populating the SIMAtlantic portal</i>	<p>Marine Institute – Commissioners of Irish Lights (CIL) – Central Statistics Office (CSO) – Department of Communications, Climate Action &amp; Environment (DCCAE) - Centre for Marine and Renewable Energy (MAREI) – University of Cork College (UCC)</p>



## QUESTIONS

### Ireland MSP process table

The main information related to MSP in Ireland used to develop the SIMAtlantic portal content are brought together in the table "Ireland MSP process". Is this information correct?

Yes. Note that a new digital tool to support marine planning is being developed between the Department and the Marine Institute that will be launched alongside the NMPP.

### Data related to Ireland, SIMAtlantic data portal

1. Are the sources of the data related to Ireland on the SIMAtlantic portal, the ones used to establish the national MSP plans?

The datasets presented on <https://simatlantic.mspdata.eu/#> are correct, especially with regard to the list of data used to compile NMPP maps.

2. Are there other sources for accessing data in web services and their metadata?  
No.

3. Are relevant layers missing? If so, which?  
[See response to n°1 in this section](#)

4. Are there web services that would allow us to publish them on the SIMAtlantic data portal?  
No.

5. Do additional relevant datasets to be shared with the other countries of SIMAtlantic project exist, in particular dealing with transnational issues?  
[Unsure. If examples could be given of datasets beyond those made available / discovered so far for Ireland, the issue should be examined in more detail.](#)

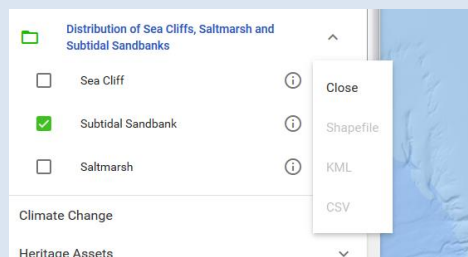
### About the Ireland's Marine Atlas

1. Are the data displayed on this portal the one used to develop the national plan?  
[Yes.](#)

2. In general, can you explain how the layer publication on this portal works?  
[Approved data is loaded or digitised from its source file format into a GIS application where it is converted to the correct geographic projection system for the portal \(WGS](#)


1984). The data is styled and labelled appropriately in the application before a new web service is generated and published to the Geographic web server. Using the atlas application, that service is picked up and added to the web portal, where metadata (such as descriptions, download links, etc.) are added manually.

3. Is the data infrastructure based on the web services or on stored data?  
A combination – some layers are stores; some are called from web services. Those which are stored are made available to the Atlas as web services.
4. If web services are used, are they harvested or are they consumed? Can you explain your choice,  
Where a third-parties web service is called, it is consumed directly into the Atlas to make sure the most up-to-date data is always used.
5. In the download section of the data catalogue, shapefile, kml and csv formats are available but not wms. Why?  
This happens when data are made available on a “view-only” arrangement, rather than a “view-and-downlaod” arrangement. It is therefore unlikely they are available for download from another source, but the metadata record should signpost this.
6. The download links are often inactive as shown in the screenshot below. Can you explain why? Is the data downloadable from an other location than the geoportal?



This happens when data are made available on a “view-only” arrangement, rather than a “view-and-downlaod” arrangement. It is therefore unlikely they are available for download from another source, but the metadata record should signpost this.

7. The Marine Institute sets up a web service by themes, for example “tourism” or “fishing”. It makes data sharing a little more complex because it is necessary to recover each web service in order to reuse all the Irish data. Can you indicate why this data organisation was chosen?  
This organisation was chosen in order to support the way the front end has been constructed (bearing in mind this has been in place since 2015) and may be revisited in the future.
8. The web services implemented are based on proprietary server software (ArcGIS). Can you explain why this technology is chosen? Does this technology imply interoperability problems with other applications for data sharing?  
Esri's services have been used successfully for many years, no data sharing problems



have been encountered via the WMS profiles used. Prototype Open Source approaches have been used in the past and options for potentially having both in parallel continue to be explored.

9. Some data have no metadata link available such as « Harbour seal » or « Grey seal ». Can you explain why? Does a metadata record exist for these layers?

Solutions are being sought to solve the problem by autumn 2020.

10. On the geoportal, the metadata link of the layer « EPA Coastal Water Quality » refers to the “12 Nautical Mile Fisheries Control Ireland” sheet. Similarly, the metadata link of the layers « Protected Wrecks” and « Recorded Ship Wrecks » refers to « All EPA Priority Urban Areas » sheet. Is it normal?

No, it looks like a mistake and research will be carried out to solve it.

### **SIMAtlantic case studies**

1. The « Carlingford lough » and « Lough foyle » areas between Ireland and Northern Ireland are the subject of case study n°1 in the project and piloted by the AFBI. Are the limits of these areas available in web service or in shape?

There is no clear information that these polygons have been definitively defined - the Loughs Agency needs to be able to confirm that this is the case.

2. Similarly, the transnational case study n°4 between Ireland and the United Kingdom concerns the “Irish Sea” the, piloted by the University of Liverpool. Are the limits of the case study area available in web service or in shape?

There is no clear information that these polygons have been definitively defined. It is best to look at the Marine Regions. - <https://www.marineregions.org/>.

## CONTACT

### Shom

French hydrographic office  
Geomatics Department

Maritime spatial planning office

[pem@shom.fr](mailto:pem@shom.fr)

Project Manager

Dominique CARVAL

Tel: +33 (0)2 56 31 23 68

[dominique.carval@shom.fr](mailto:dominique.carval@shom.fr)



SIMAtlantic Data Dissemination Manager

Magali ABJEAN

Tel: +33 (0)2 56 31 26 35

[magali.abjean@shom.fr](mailto:magali.abjean@shom.fr)