

FACTSHEET - FRANCE

Supporting Implementation of Maritime
Spatial Planning
In the Atlantic region



WP.3 – Theme 3: Data use and sharing



European Commission
Directorate-General for Maritime Affairs and Fisheries



L'océan en référence

INTRODUCTION

A factsheet related to data sharing for MSP is established regarding each country of SIMAtlantic project. It brings together information relating to MSP and addresses some technical questions relating to the operation of the national geoportal, the technical choices, the available sources, the data accessibility ...

This content is used to feed the information disseminated on the SIMAtlantic data portal (simatlantic.mspdata.eu), through different means: geodata, preconfigured maps, dashboard and associated web pages.

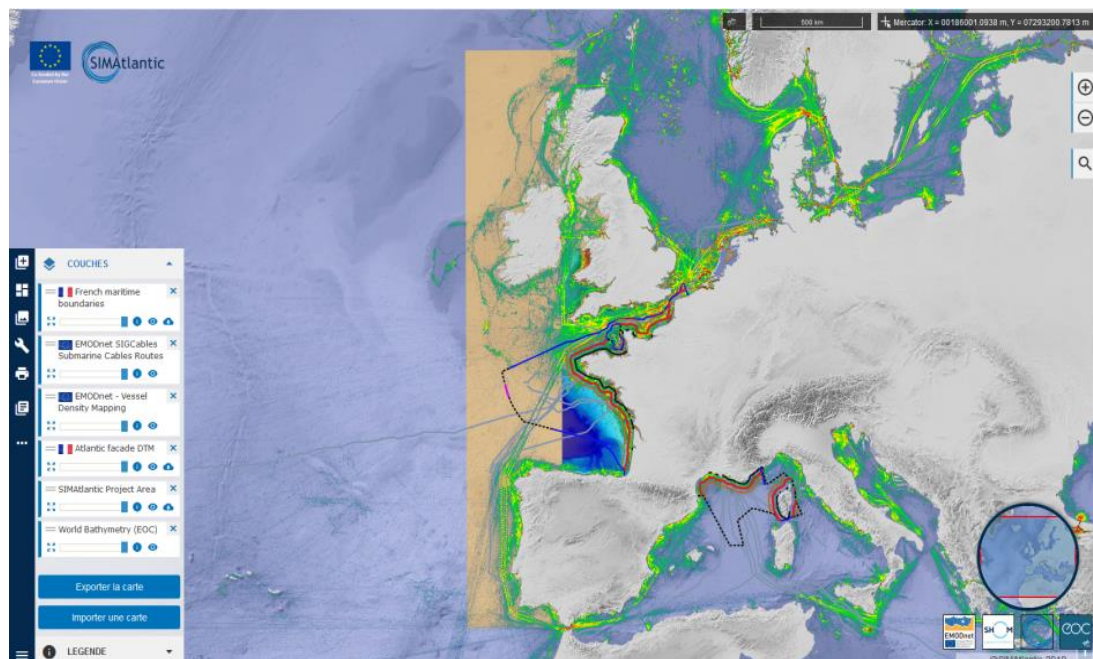
SIMATLANTIC DATA PORTAL

SIMAtlantic data portal aims to ease the access and share of the States data relevant for the MSP in the Atlantic region. In particular it is used to bring together the datasets related to the national plans.

SIMAtlantic data catalogue intends to cover the whole themes relating to MSP; maritime and terrestrial boundaries, regulatory limits, environmental, physical and biological characteristics, uses and activities, and national plans.

A major requirement for publication on SIMAtlantic data portal is the availability of metadata record and that data is available in web services.

The data related to France are available for consultation at simatlantic.mspdata.eu. The data catalogue groups the data by themes categories, and then by country.





Regarding France, the sources of the data published on SIMAtlantic data portal are:

- Available datasets published on some data portal of reference
- A non-exhaustive list of datasets used to establish the Sea Basin Strategy Documents. It was communicated in 2017 by CEREMA in the framework of SIMNORAT and SIWESTMED projects. Not all have been published on the data portal as they were not fulfilling the requirements.
- Complementary data and metadata used to establish the Sea Basin Strategy Documents, identified by analysing the information contained in the documents related to NAMO and SA regions: data used to construct the DSF maps when they are clearly identified on the map legends and sources.
- The WMS data layer disseminated by Geolittoral and the associated metadata catalogue.

FRANCE MSP process

MSP Directive transcription	<i>National legislative document which transcribes the MSP Directive</i>	LAW n ° 2016-1087 of 8 August 2016 for the recovery of biodiversity, nature and landscapes
National policies	<i>Other national legislative documents in force for the MSP</i>	National Strategy for the Sea and Coast (SNML - 2017) Decree n° 2017-724 of 3rd May 2017
Competent authority	<i>Competent authority in charge of MSP at national level</i>	Ministry of the Sea
Delegated authority	<i>Delegated authority to implement MSP</i>	On the scale of maritime façades authority for drawing up plans: 4 pairs of regional and maritime Prefects coordinators
National MSP plans	<i>Name of the MSP plan</i>	Sea Basin Strategic Document (DSF) : Strategic component adopted in 2019, operational component in the process of being established
MSP plans URL	<i>Plan consultation address</i>	Access to plans in national language http://www.dirm.memn.developpement-durable.gouv.fr/document-strategique-de-facade-maritime-dsf-r268.html http://www.dirm.nord-atlantique-manche-ouest.developpement-durable.gouv.fr/document-strategique-de-facade-dsf-r188.html http://www.dirm.sud-atlantique.developpement-durable.gouv.fr/le-document-strategique-de-la-facade-dsf-sud-r484.html http://www.dirm.mediterranee.developpement-durable.gouv.fr/le-document-strategique-de-facade-mediterranee-r335.html Access to plans in English (summary for consultation - not yet updated post adoption)) http://www.geolittoral.developpement-durable.gouv.fr/documents-english-version-r549.html
Marine plans number	<i>Number of plans drawn up by the State</i>	4 vocation maps: Eastern Channel-North Sea, North-Atlantic and Western Channel, South Atlantic, Mediterranean coast.
Covering	<i>Maritime area covered by the national plan</i>	Metropolitan France and overseas territories that includes <ul style="list-style-type: none"> • Internal waters • Territorial seas • Exclusive Economic Zone • Continental Shelf
MSP Geoportal	<i>Name of the national geoportal dedicated to MSP</i>	Geolittoral
MSP Geoportal URL	<i>Address of the national geoportal dedicated to MSP</i>	http://cerema.maps.arcgis.com/apps/webappviewer/index.html?id=3a1cc8e6d52c4c4cb85fc8fe404f5f06
Access to spatial plan	<i>Mean of access to spatial plans</i>	Access to the visualization of the vocations zone map http://cerema.maps.arcgis.com/apps/webappviewer/index.html?id=3a1cc8e6d52c4c4cb85fc8fe404

		<p>f5f06 DIRM MEMN : http://www.dirm.memn.developpement-durable.gouv.fr/IMG/pdf/fiches_zones_carte_vocations.pdf DIRM NAMO : http://www.dirm.nord-atlantique-manche-ouest.developpement-durable.gouv.fr/IMG/pdf/annexe_8_vf_light_cle2759af.pdf DIRM SA : http://www.dirm.sud-atlantique.developpement-durable.gouv.fr/IMG/pdf/08_annexe_8-p1-2.pdf DIRM MED : http://www.dirm.mediterranee.developpement-durable.gouv.fr/IMG/pdf/def_annexe6_fiches_par_zones_0919_compresses.pdf</p>
Access to plan boundaries	<i>Mean of access to plan boundaries</i>	Yes: Access to visualization, download and web services to vocation map areas (by sea front) http://www.geolittoral.developpement-durable.gouv.fr/telechargement-en-ligne-donnees-geolittoral-a802.html#sommaire_16
Access to data evidence (input)	<i>Means of access to the data used to draw up the plans</i>	A viewer had been used for the preparatory work: https://cerema.maps.arcgis.com/apps/MapJournal/index.html?appid=b25ad4b280304f5891af975141716a3f
Web services	<i>Is there a MSP data web service harvestable by the SIMAtlantic portal?</i>	Yes: http://geolittoral.din.developpement-durable.gouv.fr/wxs and Et http://www.ifremer.fr/services/wms/dcsmm
Metadata	<i>Is there a MSP metadata catalogue harvestable by the SIMAtlantic portal?</i>	Yes : http://www.geocatalogue.fr/Detail.do?fileIdentifiant=da2a175d-c5ba-444f-94f7-bd5a1cc44520
National sources	<i>National sources used for populating the SIMAtlantic portal</i>	Ministère de la Transition Ecologique et Solidaire (MTES) – Ministère de l'Économie, de l'Industrie et de l'Emploi – Institut Français de Recherche pour l'Exploitation de la Mer (Ifremer) – Open Street Map (OSM) – Cèdre – Service Hydrographique et Océanographique de la Marine (Shom) – Musée national d'Histoire naturelle (MNHN) – Observatoire national des Zones Humides (ONZH) – Centre d'études et d'expertise sur les risques, l'environnement, la mobilité et l'aménagement (Cerema) – Office français de la biodiversité (OFB)



QUESTIONS

French data

1. The main information related to MSP in France used to develop the SIMAtlantic portal content are brought together in the table "France MSP process". Is this information correct?
In addition, the DCSMM data must be valorised because they have been taken into account in the process of defining the zones of the vocation maps (<http://www.ifremer.fr/services/wms/dcsmm>)

On the other hand, the vocation maps were mainly constructed from Sea basin strategic documents data and relatively little from DCSMM data.
2. Is there an existing and available list of the datasets used to establish the part 1 of the Sea Basin Strategy Document?
These data were made available on a viewer for the preparatory work:
<https://cerema.maps.arcgis.com/apps/MapJournal/index.html?appid=b25ad4b280304f5891af975141716a3f>.
To date the list of these data does not exist, but this inventory is carried out within the framework of other projects such as the MREs (http://geolittoral.din.developpement-durable.gouv.fr/telechargement/tutoriels/liste_des_donnees_visualiseur_debat_public_EMR.pdf).

The question of updating these data is to be dealt with. It is in fact essential to provide for regular updating, as is the case, for example, with MRE planning projects.
3. Are these datasets available and in which formats?
They are currently only viewable. They come either from co-viewing services or from "hard storage". No technical difficulties in making them available.
4. In addition to the service web provided by Geolittoral, to access to the data used to establish the DSF, are there other datasets sources? (in the limits of the licenses)
[See answer to point 3.](#)
5. Are the sources of the data related to France on the SIMAtlantic portal, the one used to establish the Sea Basin Strategic Documents? In particular, in some cases, the same or nearly the same information is provided by several sources (For example, Natura 2000 areas are disseminated by Cartomer and by the MNHM).
[Yes, the data used come as far as possible from reference sources.](#)
6. Do additional relevant datasets to be shared with the other countries of SIMAtlantic project exist, in particular dealing with transnational issues?
[Work is under way to work on the integration of activity, regulatory, usage and environmental data from cross-border countries into Geolittoral viewers.](#)

CONTACT

Shom
French hydrographic office
Geomatics Department

Maritime spatial planning office
pem@shom.fr

Project Manager
Dominique CARVAL
Tel: +33 (0)2 56 31 23 68
dominique.carval@shom.fr



SIMAtlantic Data Dissemination Manager
Magali ABJEAN
Tel: +33 (0)2 56 31 26 35
magali.abjean@shom.fr