

# FACTSHEET - ENGLAND

Supporting Implementation of Maritime  
Spatial Planning  
In the Atlantic region



WP.3 – Theme 3: Data use and sharing



European Commission  
Directorate-General for Maritime Affairs and Fisheries



## INTRODUCTION

A factsheet related to data sharing for MSP is established regarding each country of SIMAtlantic project. It brings together information relating to MSP and addresses some technical questions regarding the operation of the national geoportal, the technical choices, the available sources, the data accessibility...

This content is used to feed the information disseminated on the SIMAtlantic data portal ([simatlantic.mspdata.eu](http://simatlantic.mspdata.eu)), through different means: geodata, preconfigured maps, dashboard and associated web pages.

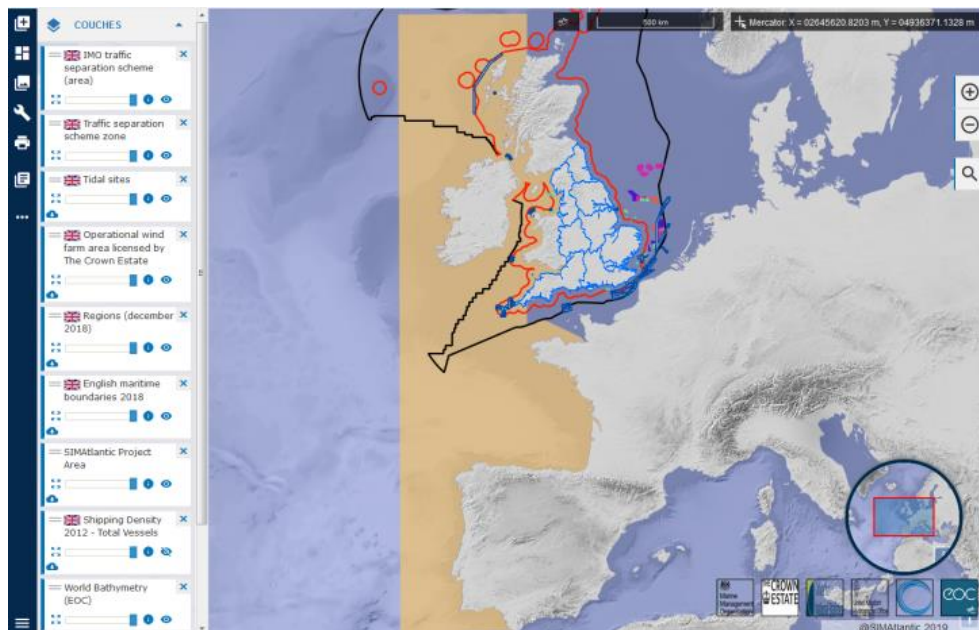
## SIMATLANTIC DATA PORTAL

The SIMAtlantic data portal aims to ease the access and enable sharing data relevant for the MSP relating to countries of the SIMAtlantic project (Portugal, Spain, France, Ireland, England and Northern Ireland). In particular it is used to bring together the datasets related to the national marine spatial plans.

The SIMAtlantic data catalogue intends to cover the all themes relating to MSP including maritime and terrestrial boundaries, regulatory limits, environmental, physical and biological characteristics, uses and activities, and national plans.

A major quality assurance requirement that must be met to enable for publication on the SIMAtlantic data portal is the availability of metadata record and that data is available in web services

The data sets related to England are available for consultation at [simatlantic.mspdata.eu](http://simatlantic.mspdata.eu). The data catalogue groups the data by themes categories, and then by country.



## ENGLAND MSP PROCESS

<b>MSP Directive transcription</b>	<i>National legislative document which transcribes the MSP Directive 2014/89 / EU</i>	/
<b>National policies</b>	<i>Other national legislative documents in force for the MSP</i>	Marine Policy Statement 2011 (MPS) Marine and Coastal Access Act 2009 (MCAA)
<b>Competent authority</b>	<i>Competent authority in charge of MSP at national level</i>	The Secretary of State for Environment, Food and Rural Affairs (DEFRA)
<b>Delegated authority</b>	<i>Delegated authority to implement MSP</i>	Marine Management Organisation (MMO)
<b>National MSP plans</b>	<i>Name of the MSP plan</i>	Marine Planning in England - Maritime plans
<b>MSP plans URL</b>	<i>Plan consultation address</i>	<a href="https://www.gov.uk/government/collections/marine-planning-in-england">https://www.gov.uk/government/collections/marine-planning-in-england</a>
<b>Number of marine plans</b>	<i>Number of plans drawn up by the State</i>	6 marine plan areas: 2 have been completed for the East and South Areas 4 draft marine plans are open for consultations until April 2020 for North East, North West, South East and South West
<b>Covering</b>	<i>Maritime area covered by the national plan</i>	British marine waters and the Coastal and Maritime Access Act
<b>MSP Geoportal</b>	<i>Name of the national geoportal dedicated to MSP</i>	Marine Planning Evidence
<b>Geoportal URL</b>	<i>Address of the national geoportal</i>	<a href="https://explore-marine-plans.marineservices.org.uk/">https://explore-marine-plans.marineservices.org.uk/</a>
<b>Access to spatial plan</b>	<i>Means of access to the plan</i>	Access in visualisation Access in web services (WMS and WFS)
<b>Access to data evidence (input)</b>	<i>Means of access to the data used to draw up the plans</i>	Access in visualisation A small part accessible in web services
<b>Web services</b>	<i>Is there a MSP data web service harvestable by the Shom SDI?</i>	Disseminate by ESRI ArcGIS REST API - Some data is accessible in WMS / WFS but it is not the majority. Difficulties to find the OGC web services URL. When there are accessible there is a web service per dataset therefore difficulty in knowing what data is accessible in WMS. They must be consulted one by one. Example : <a href="http://mmogis.services.defra.gov.uk/arcgis/rest/services">http://mmogis.services.defra.gov.uk/arcgis/rest/services</a> There are difficulties to read the WFS service for the "Marine plan areas" layer
<b>Metadata</b>	<i>Is there a MSP metadata catalogue harvestable by the Shom SDI?</i>	No metadata catalogue harvestable Existing catalogue: <a href="https://data.gov.uk/search?">https://data.gov.uk/search?</a> A small part accessible in catalogue – Incomplete metadata Web page example : <a href="https://data.gov.uk/dataset/837a175d-5e3d-44c2-ac85-99a9371069cd/marine-management-organisation-marine-plan-areas-web-mapping-service-wms">https://data.gov.uk/dataset/837a175d-5e3d-44c2-ac85-99a9371069cd/marine-management-organisation-marine-plan-areas-web-mapping-service-wms</a> Or html page : <a href="https://ckan.publishing.service.gov.uk/harvest/object/4a2f6c76-c153-4e20-b469-">https://ckan.publishing.service.gov.uk/harvest/object/4a2f6c76-c153-4e20-b469-</a>



**National sources**

*National sources used for  
populating the SIMAtlantic portal*

04ea23bc0dbc/html

Marine Management Organisation (MMO) – UK hydrographic Office (UKHO) – The Crown Estate –  
Marine Scotland – Office for National Statistics (ONS)

## CONTACT

Shom  
French hydrographic office  
Geomatics Department

Maritime spatial planning office  
[pem@shom.fr](mailto:pem@shom.fr)

Project Manager  
Dominique CARVAL  
Tel: +33 (0)2 56 31 23 68  
[dominique.carval@shom.fr](mailto:dominique.carval@shom.fr)



SIMAtlantic Data Dissemination Manager  
Magali ABJEAN  
Tel: +33 (0)2 56 31 26 35  
[magali.abjean@shom.fr](mailto:magali.abjean@shom.fr)